

Introduction to the session



- An insight in the Danish municipal experience with climate change planning – A basis for EA on climate change plans
- 1st presentation will focus on organisation
- 2nd presentation will go in depth with one case and focus on the different municipal plans
- 3rd presentation is a short basis for further discussion



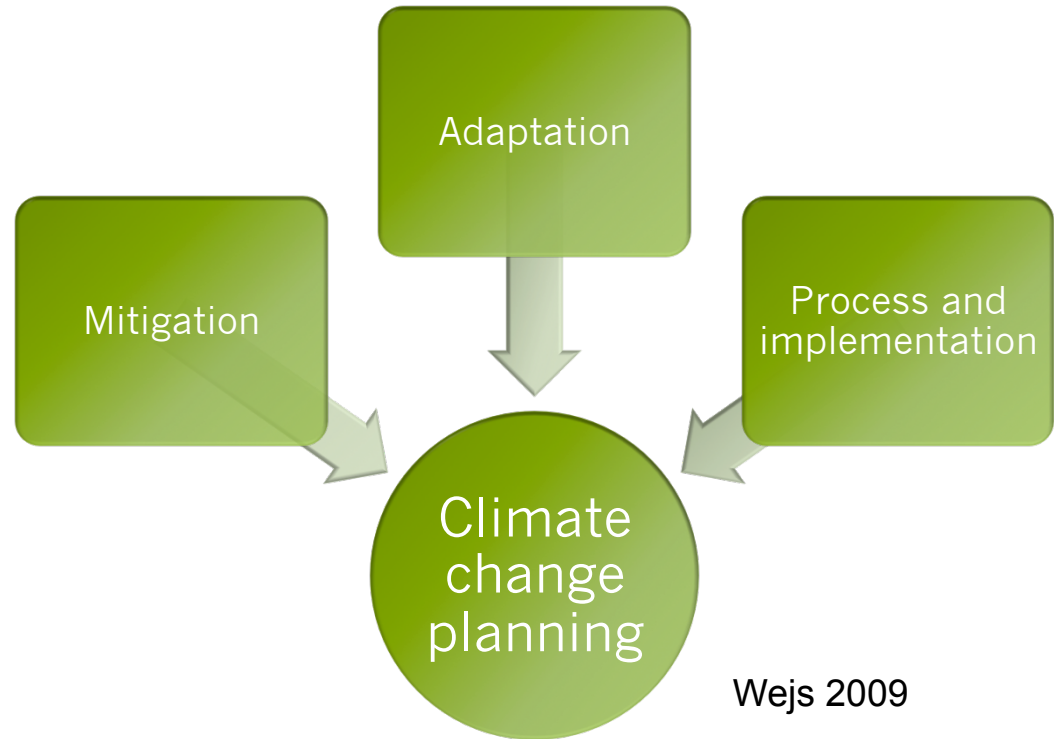
Outline

- A multi-case study
- What is climate change planning?
- A state-of-the-art
- Examples of approaches
- Solutions

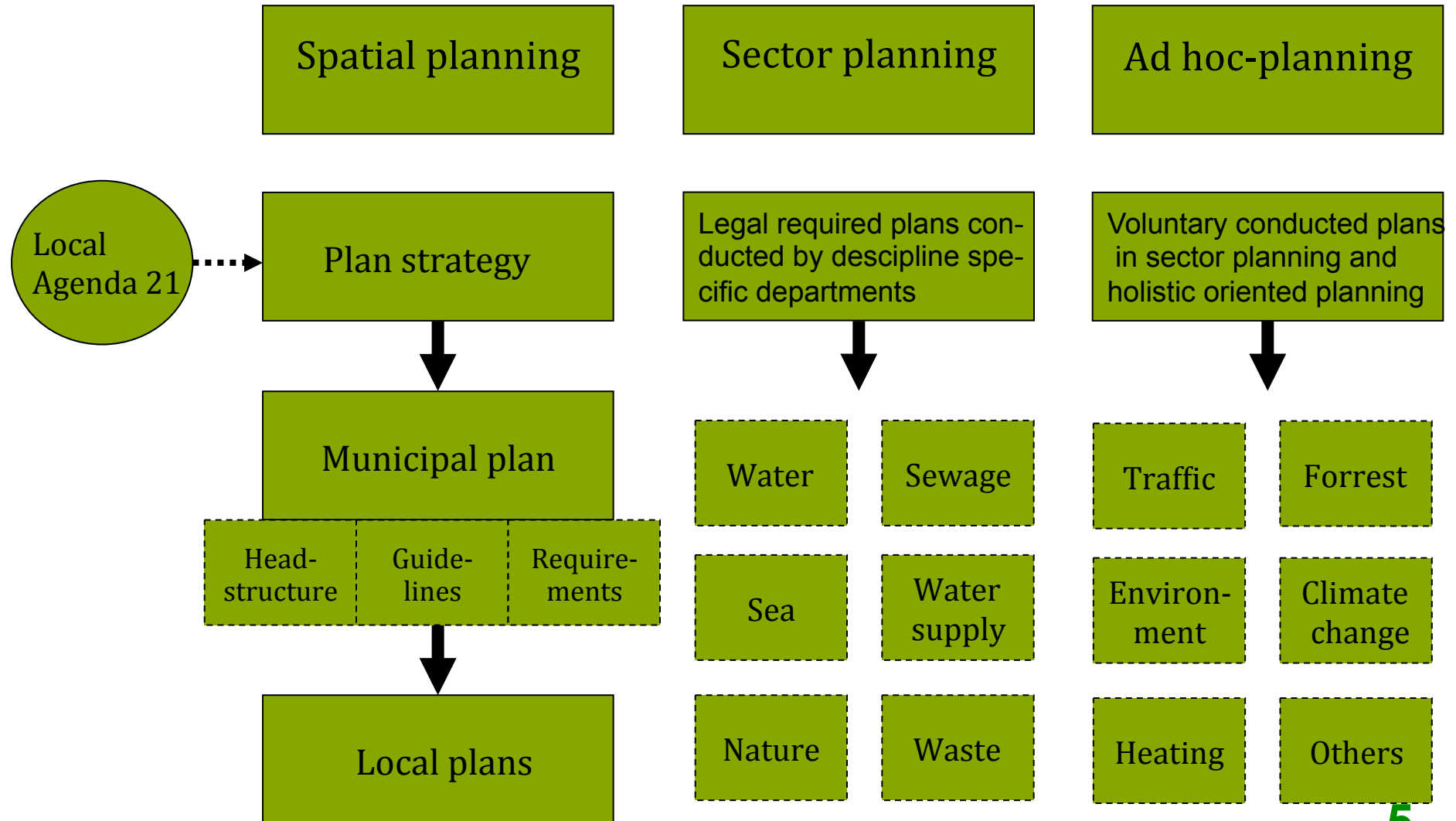
Case-municipalities



What is a climate change action plan?



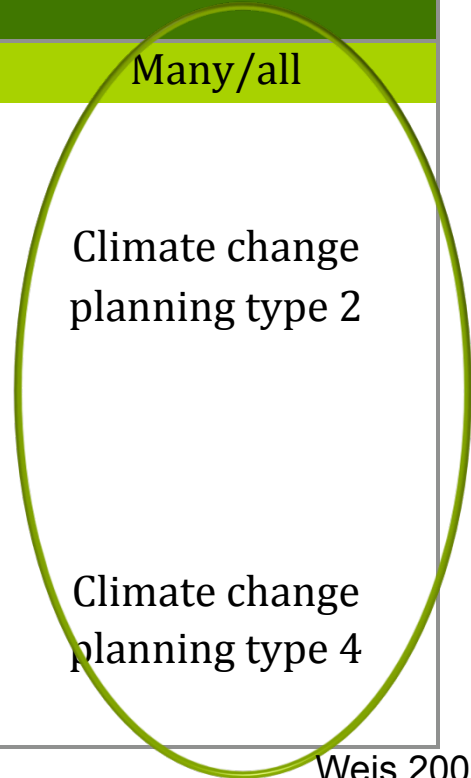
Overview of the Danish municipal planning system



Four types of climate change plans



		Number of sectors involved	
		Few/medium	Many/all
Planning hierarchy	Legal required plans	Climate change planning type 1	Climate change planning type 2
	Voluntary plans	Climate change planning type 3	Climate change planning type 4



Wejs 2009

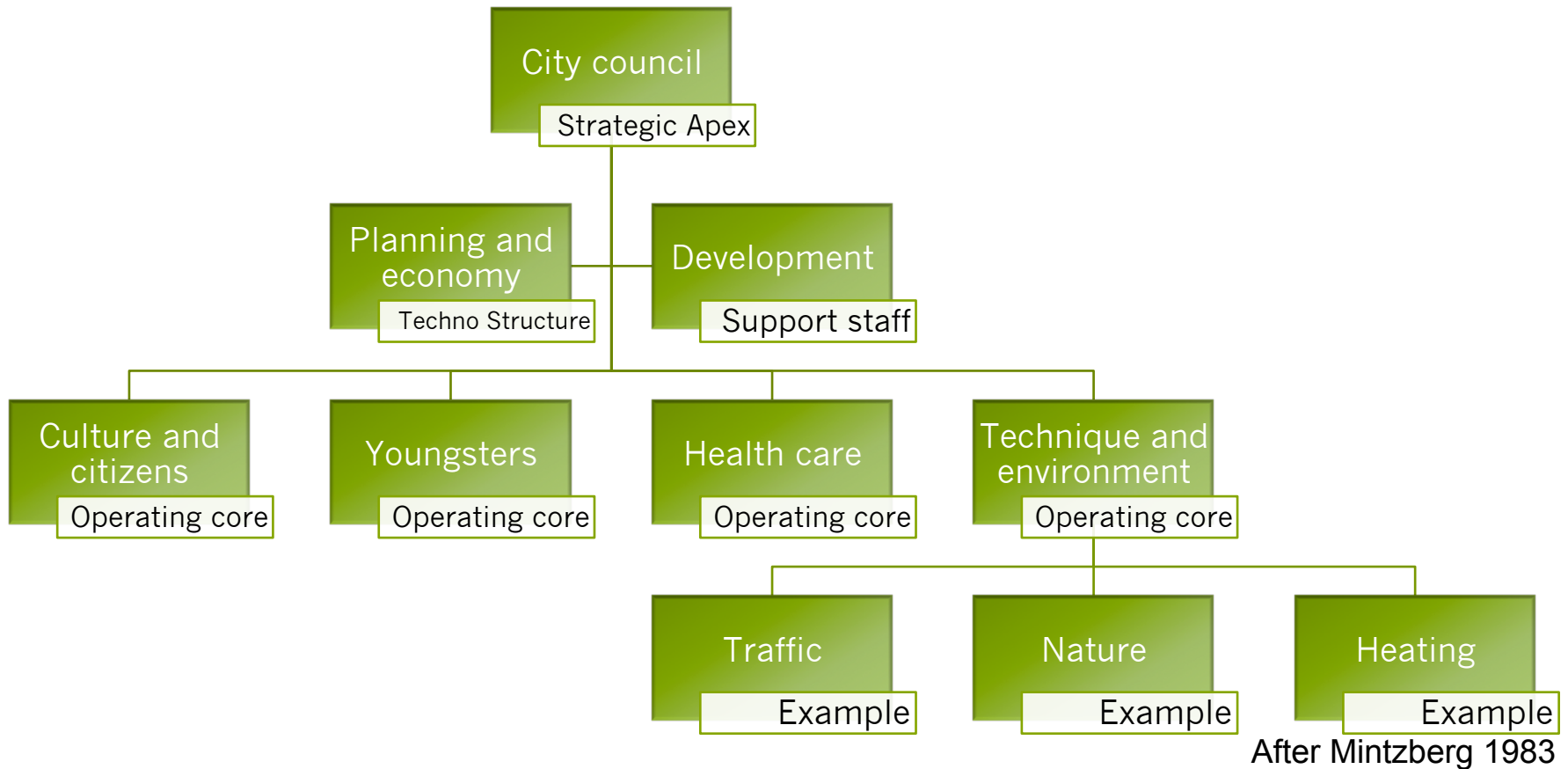
- All case-municipalities perceive climate change planning as Type 2 or Type 4

The anchoring of climate change action plans in the planning hierarchy



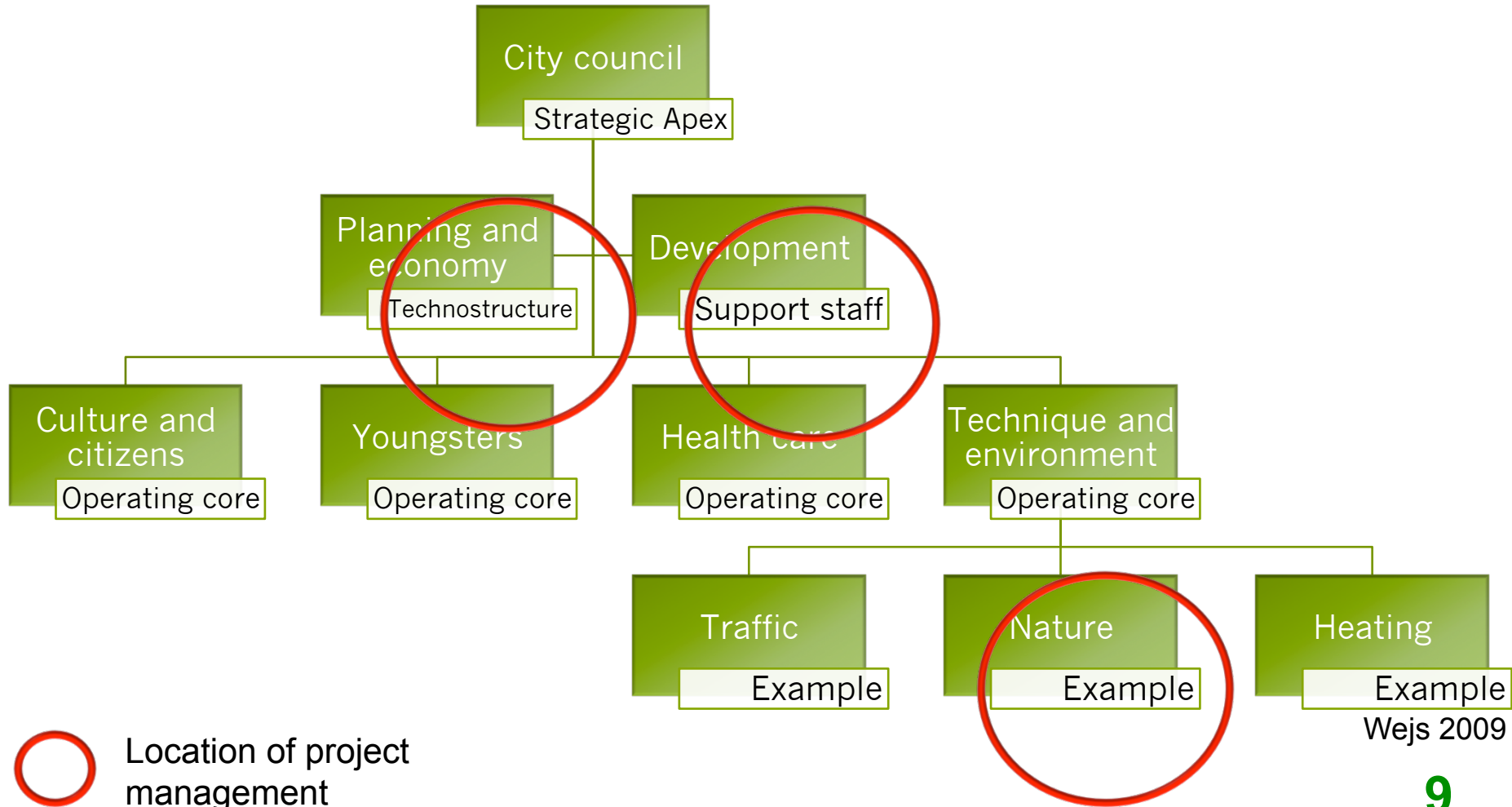
- All plans dealing with mitigation are type 2 or 4
- Adaptation is regarded as sector specific and type 1 or 3
- The climate change plans are either single voluntary plans, a part of LA21 and one case even showed a close integration with the municipality plan
- Very different perceptions of the plans in regard of the planning hierarchy

The anchoring of climate change action plans in organisations



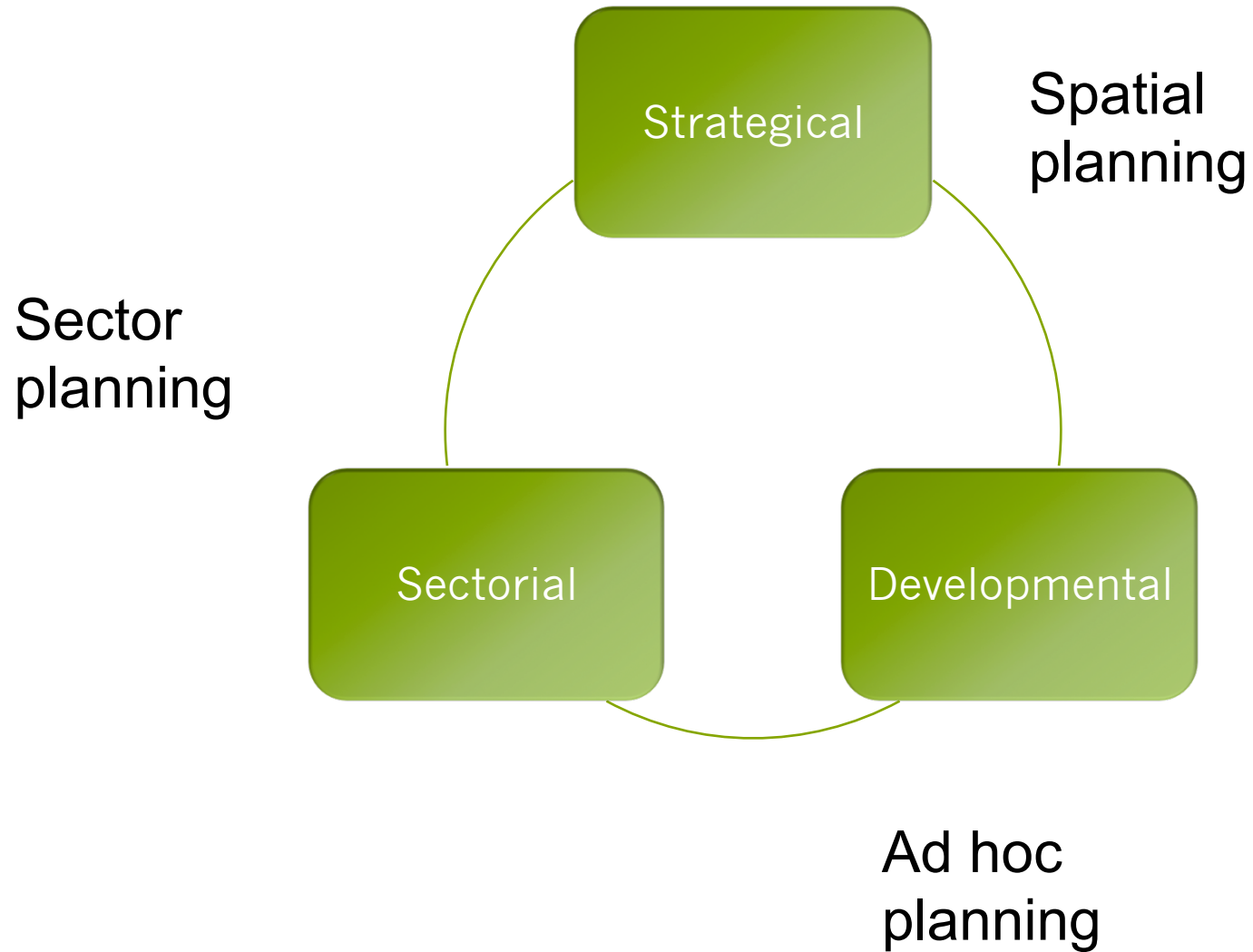
After Mintzberg 1983

The anchoring of climate change action plans in organisations





Three approaches?



Mis-match in the anchoring of the plans and the anchoring of the project management



Example Copenhagen

- An ad hoc plan
- Project management in the technical department
- Steering committee consist of the 7 directors
- Process: Initiated by the city council with a goal on carbon neutrality in 2025
- Very clear responsibility areas

Example Kolding

- Spatial plan – LA 21
- Project management in the technical department
- Steering committee, incorporated in the technical management group
- Process: experience with LA 21
- Close cooperation with the planning department

Match in the anchoring of the plans and the anchoring of the project management



Example Skive

- Sector plan on energy
- Project management in the technical department
- Steering committee with representatives from an engineer to the mayor himself
- Process: Initiated by one employee in the technical department
- Now the effort is expanded

Example Albertslund

- Spatial plan and ad hoc plan
- Project management in the planning department
- Steering committee in the technical management group
- Organised working groups and contact persons
- Process: Began with EMAS

Key words for the municipalities' organisational approaches



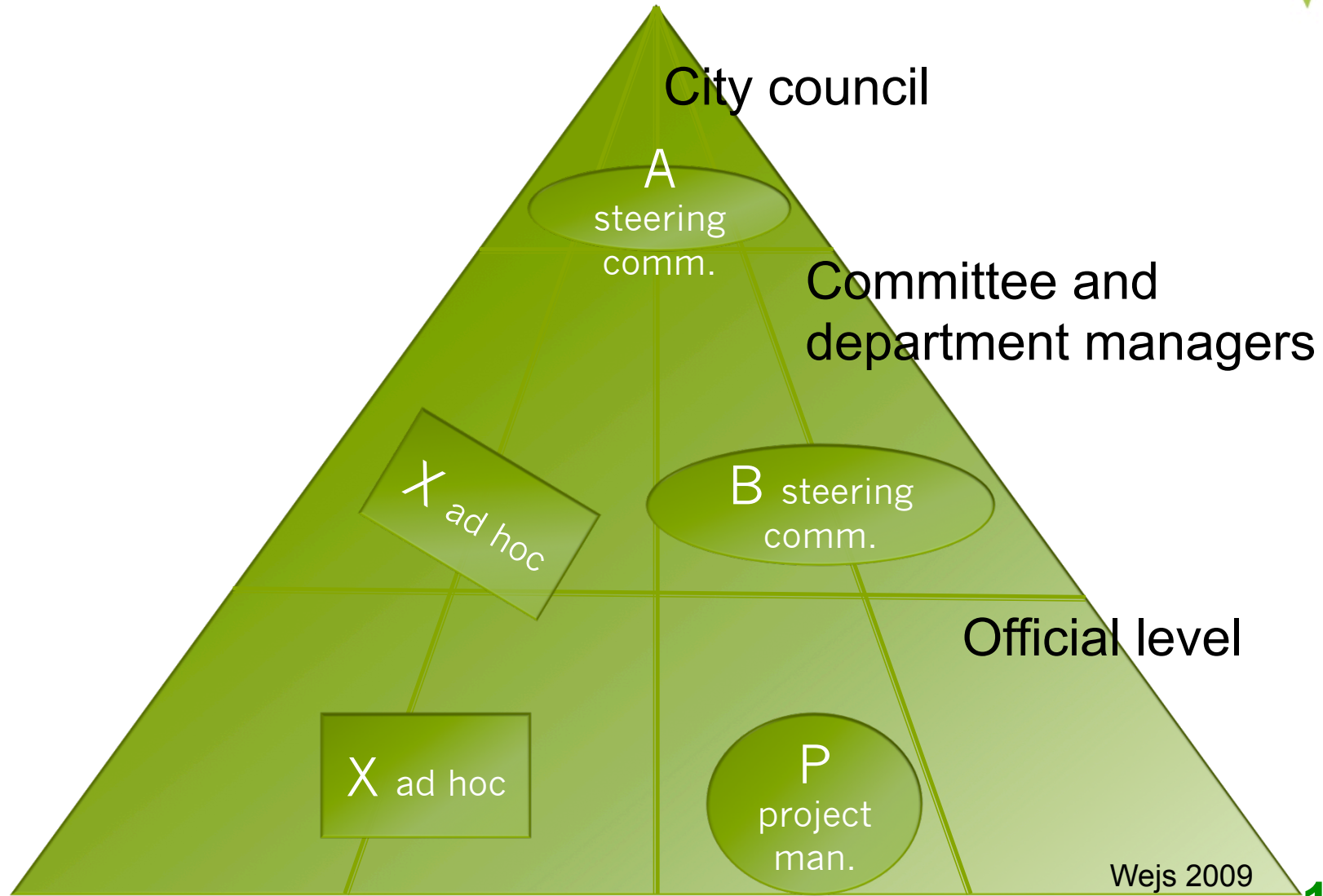
- Project management is located according to:
 - An environmental or technical working field
 - A strategically and planning oriented field
 - A developmental oriented field
- The environmental and technical field is the most widespread

Key words for the municipalities' organisational approaches



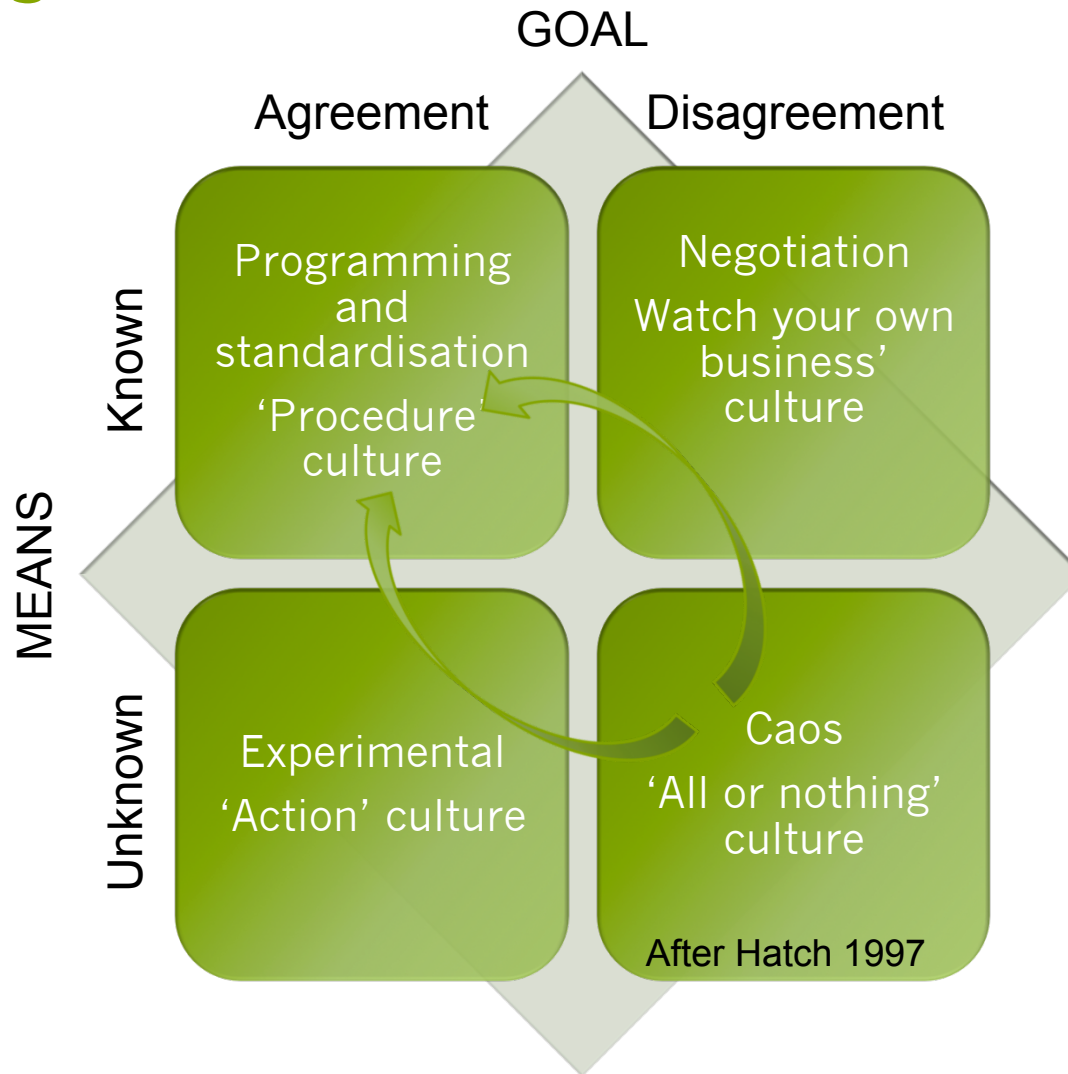
- Small interdisciplinary working groups rises ad hoc and function as cross cutting communication
- Steering committees are responsible for the overall coordination
- Theoretically, the steering committees are the best coordinating units since they consist of leaders and managers from different departments
- Difference in the approaches according to the individual municipality's experience and size

Organisation chart of climate change planning





Four stages?



Challenges and solutions based on municipal experience



Challenges

- Project management and resources in one department
- Interdisciplinary cooperation and communication
- Link to the municipal plan
- One single focus on climate change

Solutions

- Albertslund or Copenhagen approaches
- Working groups and contact persons
- Leaders need to be actively involved and supportive
- EA can lay out a broader environmental focus



Anja Wejs
PhD fellow, Aalborg University
Department of Development and Planning
The Danish Centre for Environmental Assessment
wejs@plan.aau.dk